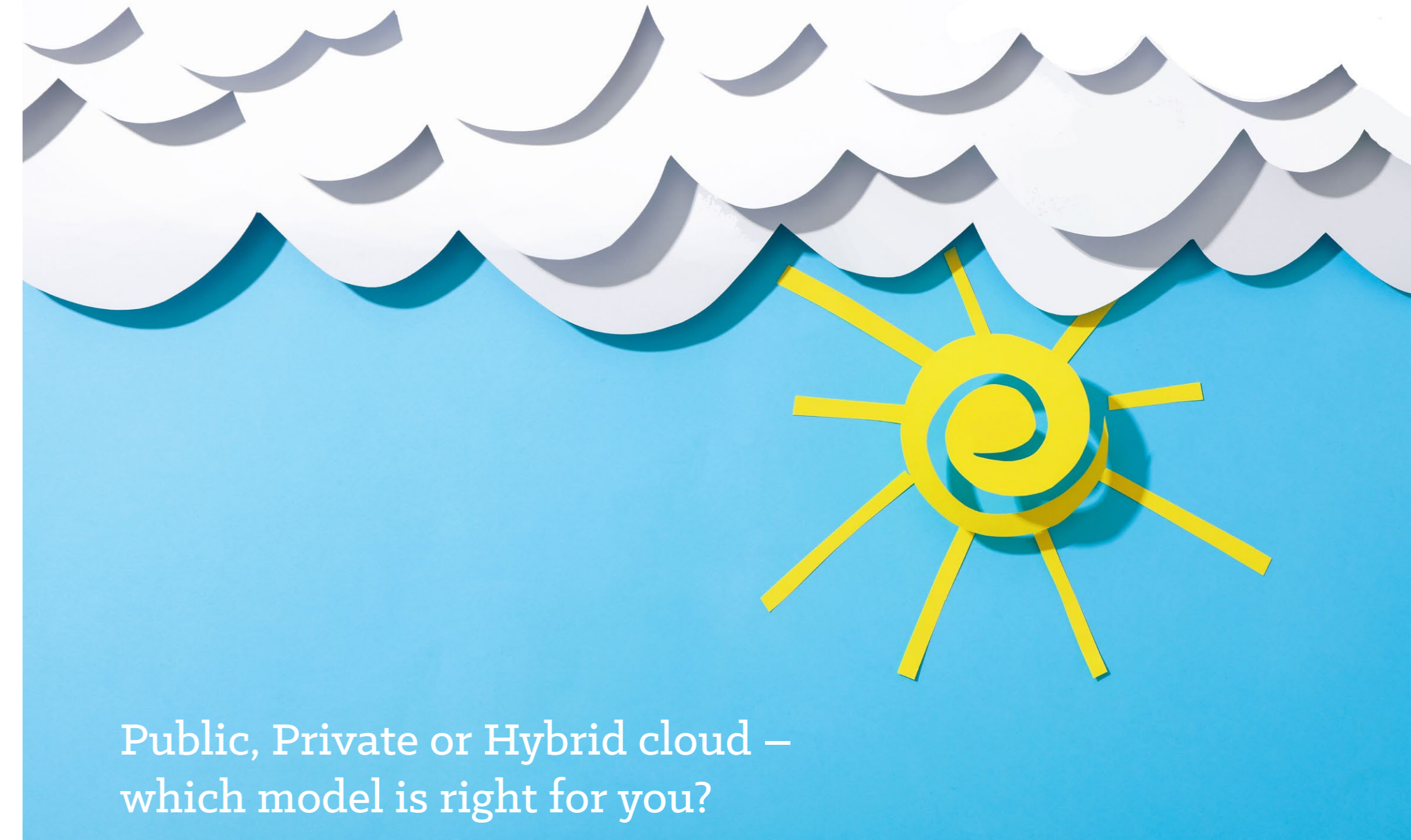


# How to Overcome the Barriers to Cloud Migration

Want to reap the benefits of the cloud,  
but not sure where to start?

We will help you find the right  
approach for your business – however  
large or small.

1. Public, Private or Hybrid cloud – which model is right for you?
2. The barriers to cloud migration and how to overcome them.
3. Find the right partner – choose Insight.
4. Get in touch.



## Public, Private or Hybrid cloud – which model is right for you?

In today's fast-changing world, businesses must stay on top of the latest developments in digital transformation to survive. Forty-two per cent of organisations recognise the importance of cloud technology in driving innovation<sup>1</sup>, with numerous benefits to migrating workloads into the cloud. Businesses can drive down operating costs by reducing spend on equipment, infrastructure and software, and facilitate flexible working so employees can work securely from anywhere, across multiple devices. Cloud technology is also essential in accessing real-time information, reacting quickly to market conditions and remaining competitive.

In an increasingly cloud-supported world, getting it right can be hard. Deciding which workloads to migrate and whether to adopt a public, private or hybrid approach is a good place to start. There's no one-size-fits-all solution, but with our experts, navigation through the complexity of migration is straightforward.

# Overcoming the barriers to successful cloud adoption

Despite widespread awareness of the benefits of adopting the cloud, many organisations remain reluctant to embrace the new technology. This is partly due to a number of commonly held myths and misconceptions. Here are some of the frequently cited concerns around adopting the cloud and how they can be overcome through effective planning.

## Migrating to the cloud can be complex

There is certainly a lot to consider before migrating to the cloud. Even understanding what the benefits are, and how they relate to your business, can be a challenge. Then you need to consider other factors, such as which services should reside where, how the migration will affect application performance, security and more. Add to this the myriad of cloud platforms and services available, and the task might start to feel overwhelming. The good news is, you don't need to do it alone. A trusted partner can help you to establish a high-level view of your cloud and data centre technologies and how they can support your business needs whilst improving the effectiveness of your cloud journey.



## We're worried about the risks

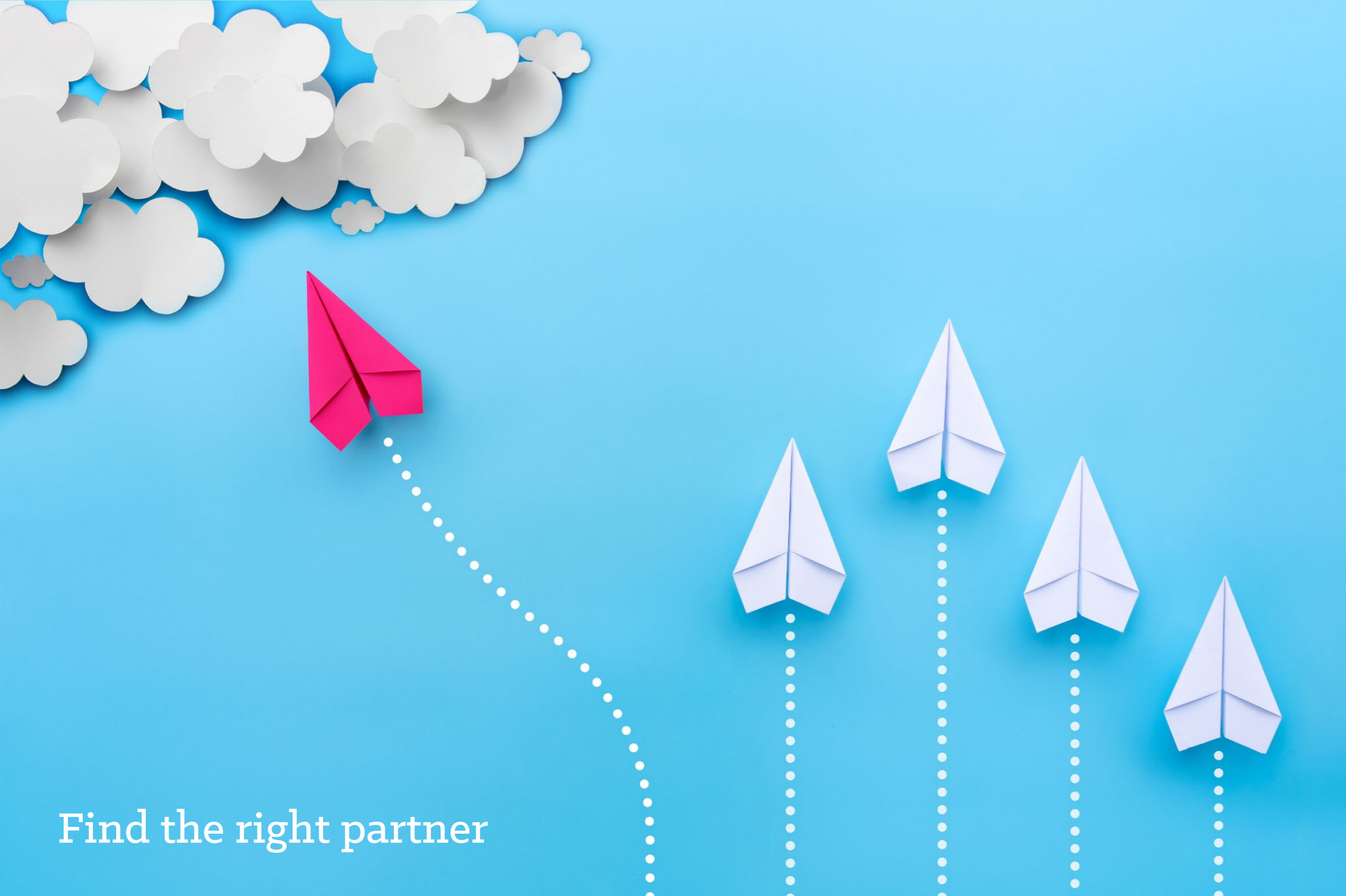
Migrating to the cloud without the appropriate expertise can lead to overspending and security issues, especially if you adopt a simple 'lift-and-shift' approach. Cloud usage may scale up and down and, without the right visibility and governance, costs can become unpredictable. Processes may need to evolve and employees may need to adapt, leading to uncertainty. Identifying the risks and opportunities involved will help you in developing a structured plan so you can safely move specific workloads and services to the cloud in a controlled and assured manner.

## The cloud can be costly

Gartner estimates that organisations that have carried out little or no cloud cost optimisation may be overspending by over 70%. One common cause of this is overprovisioning but predicting your usage from month to month can be complicated. Being able to make sense of your bill will go a long way in helping you to optimise your cloud spend, as well as implementing budgeting and forecasting best practices. Equally, it is important to consider any technical optimisation opportunities too, so you can be sure your cloud implementation is secure and delivering the best performance.

## We want to get the most out of our cloud

One consideration when you are migrating to the cloud is the strain this might put on your IT team. Do they have the necessary expertise or capacity to support your infrastructure and systems? Moving your support to an experienced and reputable partner ensures you receive 24/7 assistance for your cloud and data centre products with a single point of contact. This will free up your IT team to work on essential innovation projects that can future proof your business. And of course, it will reduce downtime and ensure you get the most from your cloud solution, with minimal hassle.



Find the right partner

Choose Insight and we will support you on your journey to successful cloud migration in four simple steps. Our **Migration Services** are designed to help you navigate through each stage of migration successfully, so you achieve a solution that is right for you.

### 1. The cloud journey

Begin your cloud journey with a **Discovery Workshop** and Insight's specialists will help you identify core business challenges and objectives, and provide you with a high-level vision of a solution tailored to your needs.

[Find out more.](#)

### 2. Strategic evolution for success

Once you have a high-level vision of your cloud solution, you'll need to map out the steps to get there. With a **Hybrid Cloud Assessment**, our Cloud Solution Architects will deliver a plan to strategically move workloads to the cloud with minimum risk.

[Find out more.](#)

### 3. Cloud transformation

Our **Azure Governance Service** is designed to help you manage your cloud spend effectively and get the full benefit from it. It will also help ensure you are following best practices for security and performance and assess the right pace for future deployment.

[Find out more.](#)

### 4. End-to-end support

Allowing Insight to deliver your support can bring multiple benefits to your business – including cost savings, flexibility and scalability. **OneCall Support Services** gives you a single point of contact for enquiries for multiple IT suppliers that's available 24/7.

[Find out more.](#)

## Get in touch

Wherever you are on your cloud journey, Insight can help you determine the best way forward. [Contact one of our specialists today.](#)

1. Insight Intelligent Technology Index.

[be.insight.com](https://be.insight.com)

MKT4255A

**Insight** 